

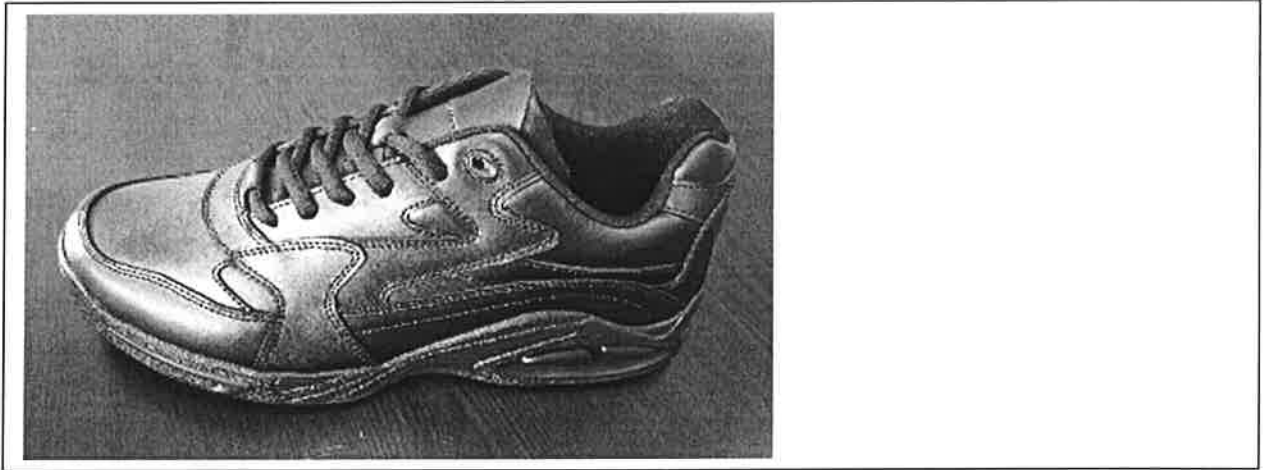
## EU Declaration of Conformity

PRODUCT TYPE: Occupational Footwear

MANUFACTURER: Shoes For Crews (Europe)Ltd

PRODUCT ID: 26533 Cafe

PRODUCT IMAGE/S:



The above product is in conformity with the regulation (EU) 2016/425 and is identical to the PPE which is subject of EU certificate issued by:

ITS Testing Services UK Ltd  
Centre Court, Meridian Business Park,  
Leicester, LE19 1WD,  
United Kingdom  
NB 0362

Relevant Harmonized Standards / Technical Specifications used to which conformity is declared:


Signed for on behalf of Shoes For Crews (Europe) Ltd

Date: Feb.8,2018

Name: GLYN BILLINGHURST

Position: VP International

Signature:

  
Shoes For Crews Europe Limited  
Unit 4, 35 A Tenth Avenue  
Westpark Business Campus  
Shannon  
Co Clare  
IRELAND